

# MOBLE SCISSOR LIFT

- ◆ For one or two persons aerial working purpose
- ◆ Maximum platform height: 3m,6m, 8m, 9m, 11m, 12m 14m,16m, 18m
- ◆ Maximum loading:300Kg 500Kg 1000Kg

## FEATURES:



1. Pointing control of lifting up and down.
2. Manganese steel lifting arm in high strength with rectangle shape
3. Anti skid floor on platform
- 4 The control panels are available on the platforms and ground.
5. Fine grinding cylinder in good sealing performance
6. Neatly folding Fences make it easy to maneuver through doorways, into elevators and throughout other height-restricted areas.

## SAFETY PRECAUTIONS

- 1.The operation voltage on the platform is 24V
- 2.Emergency stop button on the platform and ground
- 3.Auxiliary platform lowering
- 4.Telescopic legs on the chassis
- 5.Hose burst valve safety
- 6.Rain-proof design electric cabinet
7. Fence on the platform



# MOBLE SCISSOR LIFT

- ◆ For one or two persons aerial working purpose
- ◆ Maximum platform height: 3m,6m, 8m, 9m, 11m, 12m 14m,16m
- ◆ Maximum loading:300Kg 500Kg 1000Kg

## MAIN STRUCTURE:

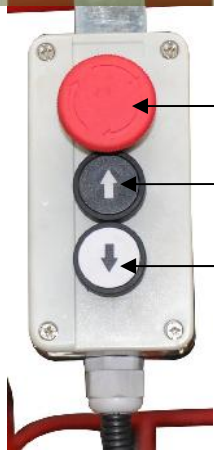


# MOBLE SCISSOR LIFT

- ◆ For one or two persons aerial working purpose
- ◆ Maximum platform height: 3m, 6m, 8m, 9m, 11m, 12m 14m, 16m
- ◆ Maximum loading: 300Kg 500Kg 1000Kg

## MAIN STRUCTURE IN DETAILS-I

### Up Control



- ◆ Emergency Stop Button
- ◆ Up Button
- ◆ Down Button

### Anti-skid Surface



- ◆ Anti skid floor on platform

### Foldable Fences



- ◆ Neatly folding Fences make it easy to maneuver through doorways, into elevators and throughout other height-restricted areas.

### Manganese Lifting Arm



- ◆ Manganese steel lifting arm in high strength with rectangle shape

### Fine Grinding Cylinder



- ◆ Fine grinding cylinder in good sealing performance

### Manual Handle

- ◆ Mounted on the spring



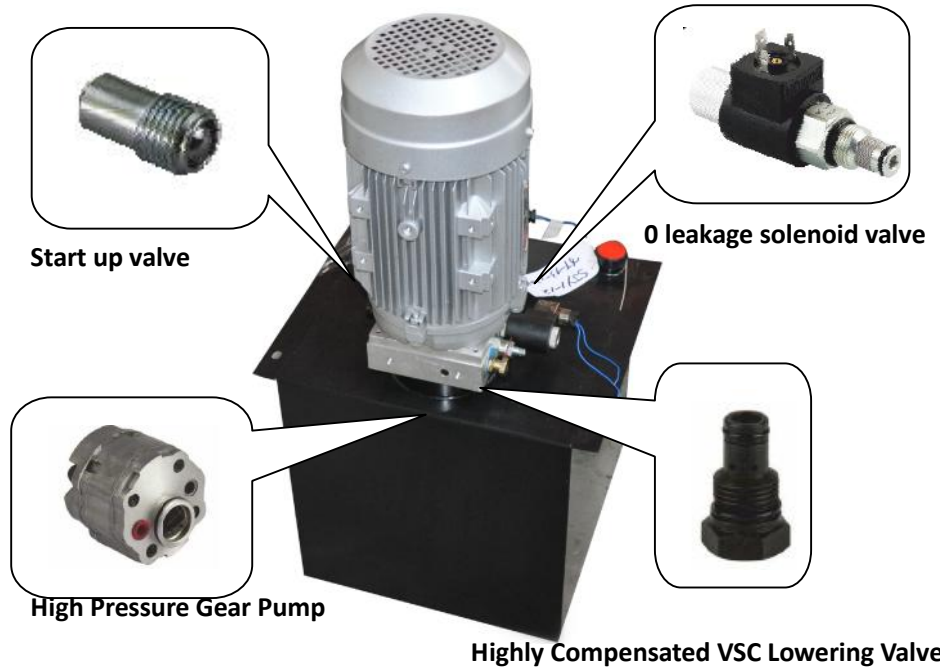


# MOBLE SCISSOR LIFT

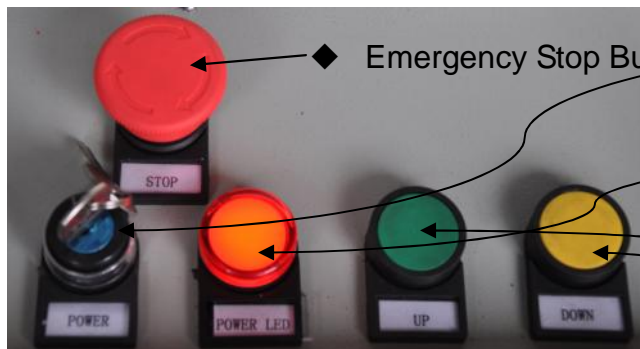
- ◆ For one or two persons aerial working purpose
- ◆ Maximum platform height: 3m, 6m, 8m, 9m, 11m, 12m, 14m, 16m
- ◆ Maximum loading: 300Kg, 500Kg, 1000Kg

## MAIN STRUCTURE IN DETAILS-II

### Hydraulic Power Pack



### Ground Control



◆ Emergency Stop Button

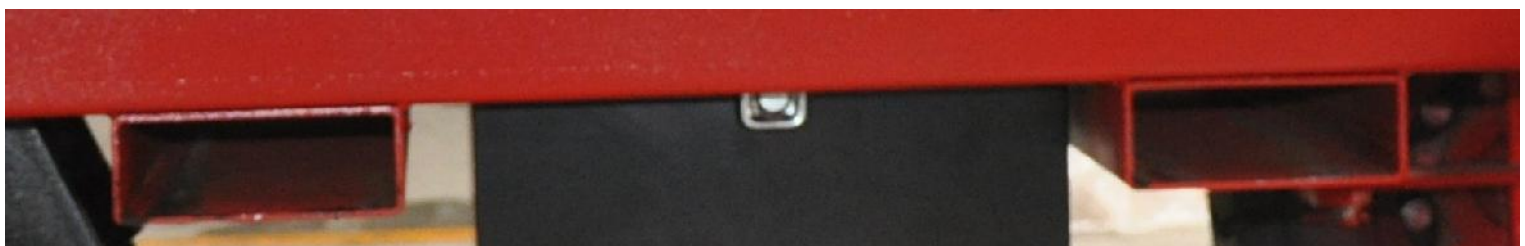
◆ Power Switch

◆ Power Indicator

◆ Up Button

◆ Down Button

### Forklift Pick-up Slot



# MOBLE SCISSOR LIFT

- ◆ For one or two persons aerial working purpose
- ◆ Maximum platform height: 3m, 6m, 8m, 9m, 11m, 12m 14m, 16m
- ◆ Maximum loading: 300Kg 500Kg 1000Kg

## MAIN STRUCTURE IN DETAILS-III

**Axle Sleeve**

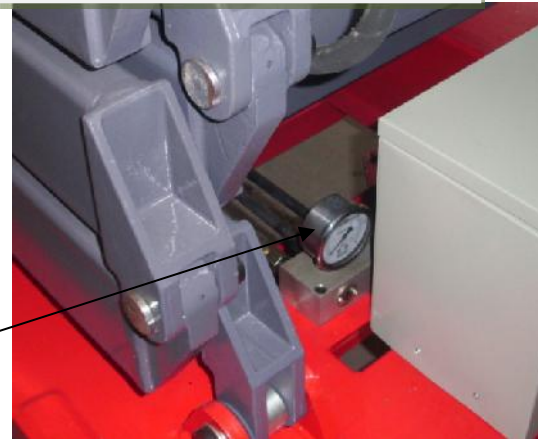


- ◆ Sleeve to effectively prevent the dust and other impurities

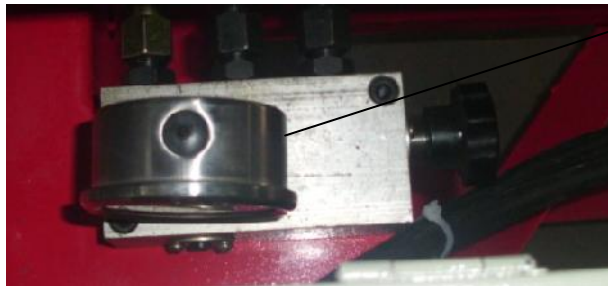
**Inflated Tire**



**Auxiliary Lowering Valve**



**Level Gauge**



**Entry Ladder**



**Telescopic legs on the chassis**



**Pressure Gauge**